

CHAIN OILERS & APPLICATORS

NVB SERIES - STRAIGHT VALVE BRUSH, ROUND OR FLAT

The NVB Series of brushes with metering valves are designed to apply lubricant to chain drives and they can be connected in series to lubricate several points and feed from a central reservoir.

Straight valve with either a round or flat brush can be used to apply lubricant to chain drives traveling in a horizontal or slightly inclined plane. Valve brushes for vertical chains are available. Used with reservoir series **RFF/REF**.

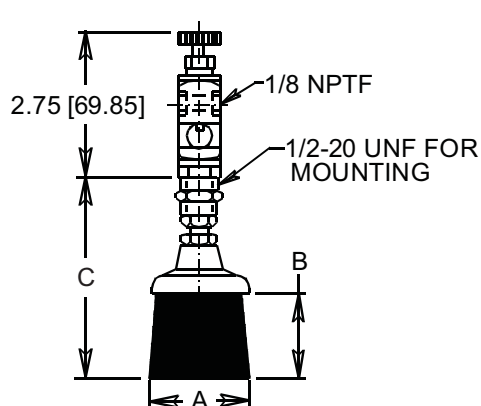
Standard Materials:

- Aluminum construction body
- Nylon brush
- Pipe threads are dryseal

Temperature Rating:

- Nylon maximum working temperatures up to 250°F (121°C)

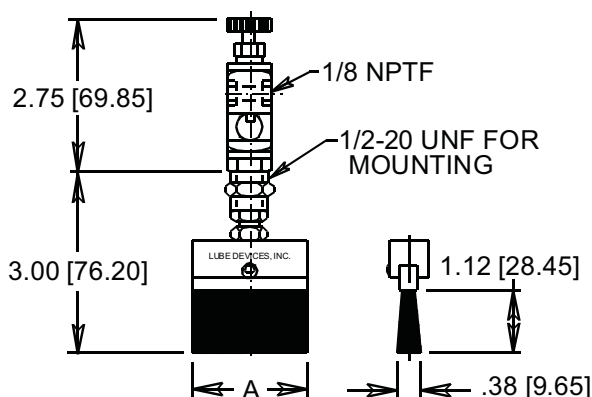
NVB100 SERIES - STRAIGHT VALVE WITH ROUND BRUSH



Straight Valve w/Round Brush				
Part No.	Brush Material	A Dia inches (mm)	B inches (mm)	C inches (mm)
NVB103-2	Nylon	1.00 (25.40)	1.62 (41.15)	3.62 (91.95)
NVB103-3	Stainless Steel			

NOTE: All dimensions are inches [mm]

NVB300 SERIES - STRAIGHT VALVE WITH FLAT BRUSH



Straight Valve w/Flat Brush		
Part No.	Brush Material	A inches (mm)
NVB301-2	Nylon	.50 (12.70)
NVB303-2	Nylon	1.00 (25.40)
NVB304-2	Nylon	1.50 (38.10)
NVB304-3	Stainless Steel	
NVB305-2	Nylon	2.25 (57.15)
NVB305-3	Stainless Steel	

NOTE: All dimensions are inches [mm]

Dimensions and specifications are subject to change without notice. Not all items are Made-To-Stock, contact us for availability.

02/14

Ph : 920-682-6877
Fx : 920-684-7210

LDI Industries

sales@ldi-industries.com
www.ldi-industries.com

CHAIN OILERS & APPLICATORS

NVB SERIES - FLAT STRIP BRUSH, STRAIGHT OR 45°

The NVB Series of brushes with metering valves are designed to apply lubricant to chain drives and they can be connected in series to lubricate several points and feed from a central reservoir.

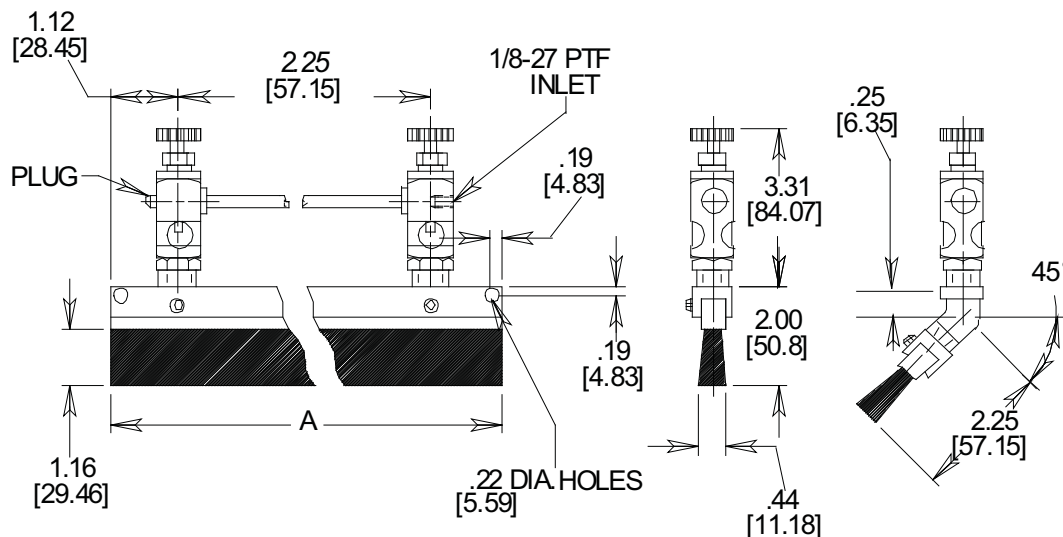
Provides precision control of lubricant to drive chains, strip stock, gears, conveyors, etc. Strip brushes are available in 2.25 inch (57.15mm) increments. Valves allow accurate feed control with drip rate readily visible through the sight window. Brush holder provides (2) .22 inch diameter (5.59mm) holes for easy mounting.

Standard Materials:

- Aluminum construction body
- Nylon brush
- Pipe threads are dryseal

Temperature Rating:

- Nylon maximum working temperatures up to 250°F (121°C)



NOTE: All dimensions are inches [mm]

Straight



45°



Straight Strip Brush

Part no.	Brush Material	A inches (mm)	Feeds
NVB201-2	Nylon	2.25 (57.15)	1
NVB202-2	Nylon	4.50 (114.30)	2

45° Strip Brush

Part No.	Brush Material	A inches (mm)	Feeds
NVB251-2	Nylon	2.25 (57.15)	1
NVB252-2	Nylon	4.50 (114.30)	2

MODIFICATIONS AVAILABLE MADE TO ORDER - CONSULT OUR FACTORY (MINIMUM ORDER MAY BE REQUIRED)

Dimensions and specifications are subject to change without notice. Not all items are Made-To-Stock, contact us for availability.

02/14

Ph : 920-682-6877
Fx : 920-684-7210

LDI Industries

sales@ldi-industries.com
www.ldi-industries.com

CHAIN OILERS & APPLICATORS

NVB SERIES - 45° VALVE WITH FLAT BRUSH

The NVB Series of brushes with metering valves are designed to apply lubricant to chain drives and they can be connected in series to lubricate several points and feed from a central reservoir.

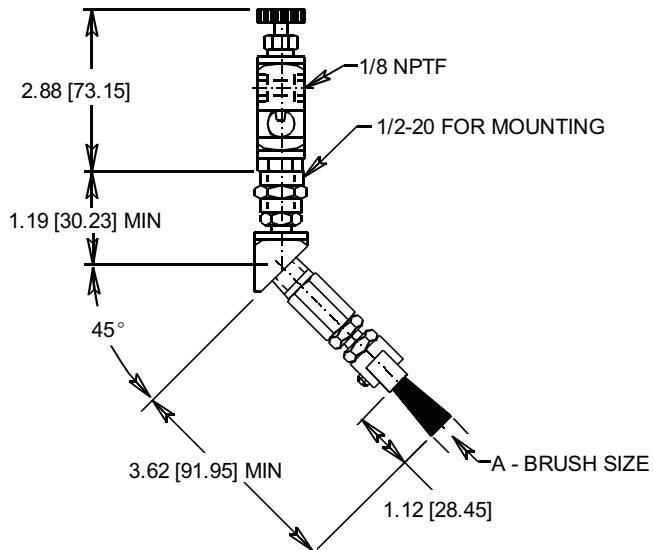
These are for applications where conditions require the lubricant to be applied at an angle. Two sizes of brushes allow selection to fit almost any chain width.

Standard Materials:

- Aluminum construction body
- Nylon brush
- Pipe threads are dryseal

Temperature Rating:

- Nylon maximum working temperatures up to 250°F (121°C)



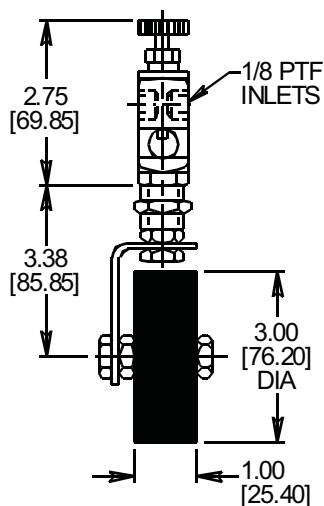
NOTE: All dimensions are inches [mm]



45° Valve with Flat Brush

Part No.	A Brush Size inches (mm)
NVB353-2	1.00 x .38 (25.40 x 9.65)
NVB354-2	1.50 x .38 (38.10 x 9.65)

NVB SERIES - ROTARY WHEEL VALVE BRUSH



NOTE: All dimensions are inches [mm]



Rotary Wheel Valve Brush

Part No.
NVB401-2

Dimensions and specifications are subject to change without notice. Not all items are Made-To-Stock, contact us for availability.

02/14

Ph : 920-682-6877
Fx : 920-684-7210

LDI Industries

sales@ldi-industries.com
www.ldi-industries.com